

### SoundCTRL System equipment condition analysis system

- **Preserve.** Record and store signals produced by critical equipment.
- **Compare.** Recall and contrast recent recordings to a baseline.
- **Diagnose.** Make smart decisions based upon what you hear and see.
- **Manage.** Maintain equipment data and condition information.
- **Report.** Create reports based upon current recordings and component histories.



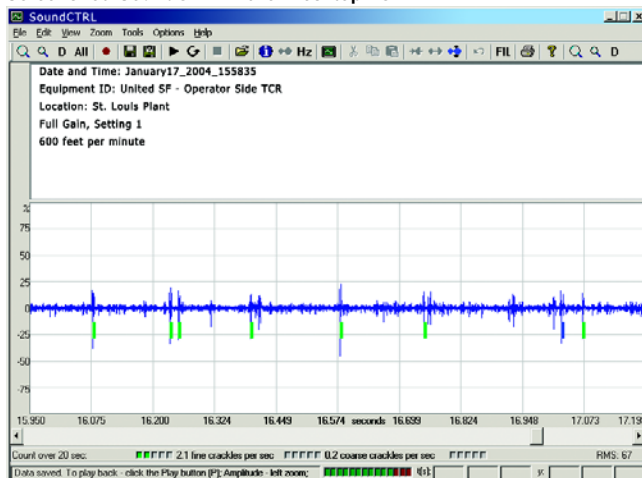
#### PRODUCT FEATURES:

- Handheld system with desktop PC integration.
- Ultrasonic signal capture (20 sec. per recording) and automatic waveform display.
- Equipment ID and location fields for easy component tracking and file retrieval.
- Automatic date and time stamp on files for easy tracking and retrieval.
- Comment fields for storing critical equipment info such as operating condition and test settings.
- Root mean square (RMS) calculation and reporting capability.
- Analysis of sound characteristics for identification of potential component faults.
- User-friendly menus and controls.
- Ideal for monitoring a wide variety of components such as bearings, gears, valves, and pumps.

#### SPECIFICATIONS/ SYSTEM REQUIREMENTS:

- The SoundCTRL System consists of a Windows Pocket PC (hp iPAQ h5150) and SoundCTRL software\*, Pocket PC and Desktop PC versions.
- Weighing just 8 oz., the SoundCTRL System can be worn on a belt or carried in a pocket.
- To capture ultrasonic signals, the CTRL UL101\*\* receiver must be used with the SoundCTRL System.
- The sturdy, industrial design of the HP iPAQ h5450 includes backward compatibility for expansion pack support and a universal cradle that supports USB or serial interface for seamless integration with a desktop PC.
- The SoundCTRL Desktop PC software requires a Pentium 200 with 64 MB memory and a 10 GB hard disk running Microsoft Windows 98/ME/ NT/2000/ XP for operation.

Screenshot: SoundCTRL 1.0 for Desktop PC



\* The SoundCTRL software is developed exclusively for CTRL Systems, Inc. by Stethographics, Inc.

\*\* The CTRL UL101 is sold separately. To request information on the CTRL UL101, please contact CTRL Systems, Inc.

