

CTRL Ultrasonic Inspection Systems



Originally designed for the U.S. Military, the CTRL UL101 is now used worldwide for predictive maintenance. The UL101 Receiver converts ultrasound signals produced by critical equipment into audible sounds that are easily recognizable so the user can evaluate the condition of individual components - even in extremely noisy environments.

Early warning signs and defects can be detected preventing costly repairs, safety related injuries, and downtime. Applications include mechanical, hydraulic, electrical, vacuum, pressurized, and non-pressurized systems and components.

UL101 Full Kit, Standard Model

Shipping Weight: 7 lbs./Dimensions: 15" x 13" x 6"
(P/N 000031)

UL101 Full Kit, Intrinsically Safe Model

Shipping Weight: 7 lbs./Dimensions: 15" x 13" x 6"
(P/N 000033)

Full Inspection Kits Include:

UL101 Receiver	Industrial Grade Headset
Universal Transmitter (UT2000)	Carrying Case
1-inch Acoustic Probe	Training CD
Set of 4 Solid Probes (3, 5, 8, 13-inch)	Operator's Manual
Acoustic Extension Probe Set (5 pieces)	1-Year Warranty
Concentrator Set (3 pieces)	Training – 1 ½ Days CTRL Headquarters

UL101 Air Audit Kit, Standard Model

Shipping Weight: 6 lbs./Dimensions: 15" x 13" x 6"
(P/N 000036)

UL101 Air Audit Kit, Intrinsically Safe Model

Shipping Weight: 6 lbs./Dimensions: 15" x 13" x 6"
(P/N 000038)

Air Audit Inspection Kits Include:

UL101 Receiver	Industrial Grade Headset
Concentrator Set (3 pieces)	Carrying Case
Acoustic Extension Probe Set (5 pieces)	Training CD
1-inch Acoustic Probe	Operator's Manual
3-inch Solid Probe	1-Year Warranty
	Training – 1 ½ Days CTRL Headquarters

UL101 Base Kit, Standard Model

Shipping Weight: 5 lbs./Dimensions: 15" x 13" x 6"
(P/N 000030)

UL101 Base Kit, Intrinsically Safe Model

Shipping Weight: 5 lbs./Dimensions: 15" x 13" x 6"
(P/N 000032)

Base Inspection Kits Include:

UL101 Receiver	Industrial Grade Headset
Carrying Case	Training CD
Operator's Manual	1-Year Warranty
	Training – 1 ½ Days CTRL Headquarters

UL101 Corona Kit, Standard Model

Shipping Weight: 23 lbs./Dimensions: 26" x 18" x 18"
(P/N 000041)

Corona Inspection Kits Include:

UL101 Receiver	Industrial Grade Headset
PowerBeam 300	Carrying Case
Operator's Manual	1-Year Warranty
Training CD	Training – 1 ½ Days CTRL Headquarters

TO PLACE AN ORDER: CALL 1.410.876.5676 – FAX 1.410.848.8073 – E-MAIL: info@ctrlsys.com

CTRL Components And Accessories

The Components and Accessories were designed by the CTRL Research & Development Staff for to enhance the performance of the UL101 for a variety of applications. The quality and performance of the components manufactured by CTRL are well tested and proven by such organization as NASA.

The components are either part of the kit or may be purchased separately, depending upon your specific needs. Regardless of the industry you serve, CTRL can help integrate these products through training and turnkey programs for faster return on investment by improving production, enhancing safety standards, and saving energy costs.

UL101 Receiver, Standard Model	(P/N 026005)
UL101 Receiver, Intrinsically Safe Model	(P/N 026007)

Handheld sensor with analog meter detects ultrasound from a greater distance with a higher signal to noise ratio than any other sensor on the market today. Easy-to-use controls include output switch, gain mode switch, and potentiometer. No calibration or special maintenance necessary. Operates on a single 9-volt battery for approximately 45 hours of continuous use.



UT2000 Universal Transmitter, Standard Model	(P/N 026010)
UT2000 Universal Transmitter, Intrinsically Safe Model	(P/N 026012)

Fills non-pressurized vessels/cavities with ultrasound by emitting an ultrasonic signal to create a sense of pressure. Enables the detection of leaks in seals, gaskets, and welds with a quick scan of the Receiver. No calibration or special maintenance is necessary. Operates on a single 9-volt battery for 300 hrs of continuous use.

Industrial Grade Headset (Behind-The-Head)	(P/N 025005)
Industrial Grade Headset (Over-The-Head)	(P/N 025010)

Allows the user to hear the converted ultrasound while reducing the amount of ambient audible sound. This is the same headset used by pilots. Headset is available in two models: Over the Head (OTH) and Behind the Head (BTH) for use with hardhat.



Concentrator Set	(P/N 000065)
Large Concentrator	(P/N 070007)
Mini Concentrator	(P/N 070009)
Acoustic Tip	(P/N 070037)

The conical shaped Concentrators increases the distance of reception of ultrasound and narrows the focus from approximately 45° to 5° from center, blocking competing sounds and improving accuracy in pinpointing specific failures. The inverted conical shaped Acoustic Tip attachment pinpoints airborne ultrasound with high precision from a short distance and is recommended for small leaks.



Solid Probe Set (Set of 5)	(P/N 000050)
3-inch Solid Probe	(P/N 040045)
5-inch Solid Probe	(P/N 040050)
8-inch Solid Probe	(P/N 040055)
13-inch Solid Probe	(P/N 040060)
23-inch Solid Probe	(P/N 040065)

Set of solid aluminum probes for contact inspections of mechanical components including bearings, gears, motors, and hydraulics. Each length is designed for reach in different situations, while maintaining integrity of sound reception. Provide increased clarity and reduction of competing noise.



Acoustic Extension Probe Set	(P/N 000005)
Adapter	(P/N 070005)
Polycarbonate Probe (12-inch)	(P/N 070040)
Metal Acoustic Probe (12-inch, Double Threaded End)	(P/N 070045)
Metal Acoustic Probe (12-inch, Single Threaded End)	(P/N 070050)

Designed for difficult plant conditions, such as hard to reach areas or working around electrical components. Each probe can be connected together to provide additional reach up to 3 feet. The set includes 2 probes with double threaded ends, 1 single threaded probe, 1 polycarbonate probe for electrical inspection, and one adapter.



1-inch Acoustic Probe	(P/N 070035)
------------------------------------	---------------------



CTRL Components And Accessories

Power Beam 300.....(P/N 007005)

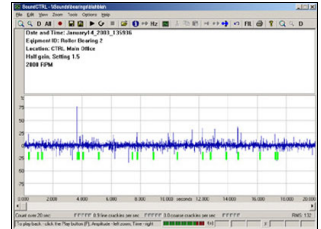
The PowerBeam 300 attachment extends the range of the UL101 Receiver to 300 feet. Used for detection of malfunctions in electrical components, compressed air systems, steam traps, hydraulic systems, and bearings that cannot be tested in contact mode. A laser pointer zeros in on the component being tested and is powered by two AAA batteries. (PowerBeam 300 shown with the UL101 receiver. The UL101 is required for operation.†)



SoundCTRL.....(P/N 000010)
SoundCTRL(Software Only)(P/N 000011)



The handheld SoundCTRL System connects directly to the UL101 Receiver for an easy one-step inspection-collection process. SoundCTRL recognizes the ultrasound signals received by the UL101 and immediately allows the user to record, play back, compare, and analyze audio and visual ultrasonic wave files of these signals for condition analysis. (HP iPAQ 5450 is shown at right with the SoundCTRL Pocket PC Software††)



- Receiver Jacket(P/N 005055)**
- Belt Pouch.....(P/N 005035)**
- Gel Ear Seals(P/N 005007)**
- Defect Tags (Priority 1) – Pack of 100.....(P/N 030085)**
- Defect Tags (Priority 2) – Pack of 100.....(P/N 030086)**
- Defect Tags (Priority 3) – Pack of 100.....(P/N 030087)**
- Carrying Case(P/N 020015)**
- Training CD.....(P/N 005025)**
- Operator’s Manual.....(P/N 005010)**



TO PLACE AN ORDER: CALL 1.410.876.5676 – FAX 1.410.848.8073 – E-MAIL: info@ctrlsys.com

Contact CTRL Systems today to place an order or to request a quotation:

CTRL Systems Corporate Office
 1004 Littlestown Pike, Suite H
 Westminster, MD 21157 USA

1.410.876.5676 phone • 1.877.287.5797 toll free
 1.410.848.8073 fax • e-mail: info@ctrlsys.com



For more information, visit CTRL on the web at www.ctrlsys.com